



Noise Monitoring Result

Day Time (0700 - 1900hrs on normal weekdays)

Location: M1a - Harbour Road Sports Centre

Date	Time	Weather	Measurement Noise Level			Baseline Level	Construction Noise Level	Limit Level
			Leq	L10	L90	Leq	Leq	Leq
Unit: dB(A), (30-min)								
29/11/2016	10:12	Cloudy	74.3	75.5	72.0	72	70	75
5/12/2016	11:20	Fine	74.7	78.0	68.5	72	71	75
13/12/2016	13:00	Fine	74.3	76.0	71.5	72	70	75
20/12/2016	13:25	Fine	75.0	76.5	73.0	72	72	75

Location: M2b - Noon-day gun area

Date	Time	Weather	Measurement Noise Level			Baseline Level	Construction Noise Level	Limit Level
			Leq	L10	L90	Leq	Leq	Leq
Unit: dB(A), (30-min)								
29/11/2016	10:54	Cloudy	67.2	68.5	65.0	68	67	75
5/12/2016	13:00	Fine	68.3	69.5	65.5	68	60	75
13/12/2016	14:01	Fine	66.0	67.0	65.5	68	66	75
20/12/2016	14:14	Fine	68.3	70.0	65.5	68	60	75

Location: M3a - Tung Lo Wan Fire Station

Date	Time	Weather	Measurement Noise Level			Baseline Level	Construction Noise Level	Limit Level
			Leq	L10	L90	Leq	Leq	Leq
Unit: dB(A), (30-min)								
29/11/2016	11:30	Cloudy	66.0	67.0	64.0	69	66	75
5/12/2016	13:50	Fine	65.1	66.5	62.5	69	65	75
13/12/2016	08:00	Fine	64.0	65.0	62.5	69	64	75
20/12/2016	08:00	Fine	65.0	66.5	64.0	69	65	75

Location: M4b - Victoria Centre

Date	Time	Weather	Measurement Noise Level			Baseline Noise Level	Construction Noise Level	Limit Level
			Leq	L10	L90	Leq	Leq	Leq
Unit: dB(A), (30min)								
29/11/2016	13:13	Cloudy	68.0	70.5	63.0	67	60	75
5/12/2016	14:35	Fine	63.9	65.0	61.5	67	64	75
13/12/2016	08:40	Fine	65.0	66.5	62.0	67	65	75
20/12/2016	08:40	Fine	66.0	67.0	64.5	67	66	75

Location: M5b - City Garden

Date	Time	Weather	Measurement Noise Level			Baseline Level	Construction Noise Level	Limit Level
			Leq	L10	L90	Leq	Leq	Leq
Unit: dB(A), (30min)								
29/11/2016	13:57	Cloudy	68.9	71.0	65.5	68	62	75
9/12/2016	08:30	Fine	67.0	68.9	65.4	68	67	75
13/12/2016	09:25	Fine	67.0	69.5	66.5	68	67	75
20/12/2016	09:30	Fine	69.0	70.5	67.0	68	62	75

Location: M6 - HK Baptist Church Henrietta Secondary School

Date	Time	Weather	Measurement Noise Level			Baseline Level	Construction Noise Level	Limit Level
			Leq	L10	L90	Leq	Leq	Leq
Unit: dB(A), (30-min)								
29/11/2016	14:35	Cloudy	71.0	73.0	67.0	71	59	70
9/12/2016	09:58	Fine	71.4	74.0	65.5	71	63	65
13/12/2016	10:05	Fine	67.5	68.5	66.0	71	68	65
20/12/2016	10:15	Fine	67.5	68.0	66.0	71	68	65



Noise Monitoring Result

Day Time (0700 - 1900hrs on normal weekdays)

Location: M7e - International Finance Centre (Eastern End of Podium) (Reference Station)

Date	Time	Weather	Measurement Noise Level			Baseline Level	Construction Noise Level	Limit Level
			Leq	L10	L90	Leq	Leq	Leq
Unit: dB(A), (30-min)								
29/11/2016	08:00	Cloudy	64.0	65.0	62.5	67	64	N/A
5/12/2016	09:00	Fine	63.0	65.5	61.5	67	63	N/A
14/12/2016	08:30	Fine	63.0	65.0	62.0	67	63	N/A
22/12/2016	08:30	Fine	66.0	67.5	64.5	67	66	N/A

Location: M7w - International Finance Centre (Western End of Podium)

Date	Time	Weather	Measurement Noise Level			Baseline Level	Construction Noise Level	Limit Level
			Leq	L10	L90	Leq	Leq	Leq
Unit: dB(A), (30-min)								
29/11/2016	08:35	Cloudy	61.0	63.0	59.0	69	61	75
5/12/2016	09:35	Fine	62.0	63.0	61.0	69	62	75
14/12/2016	09:10	Fine	61.0	62.0	60.5	69	61	75
22/12/2016	09:15	Fine	64.5	65.0	63.5	69	65	75

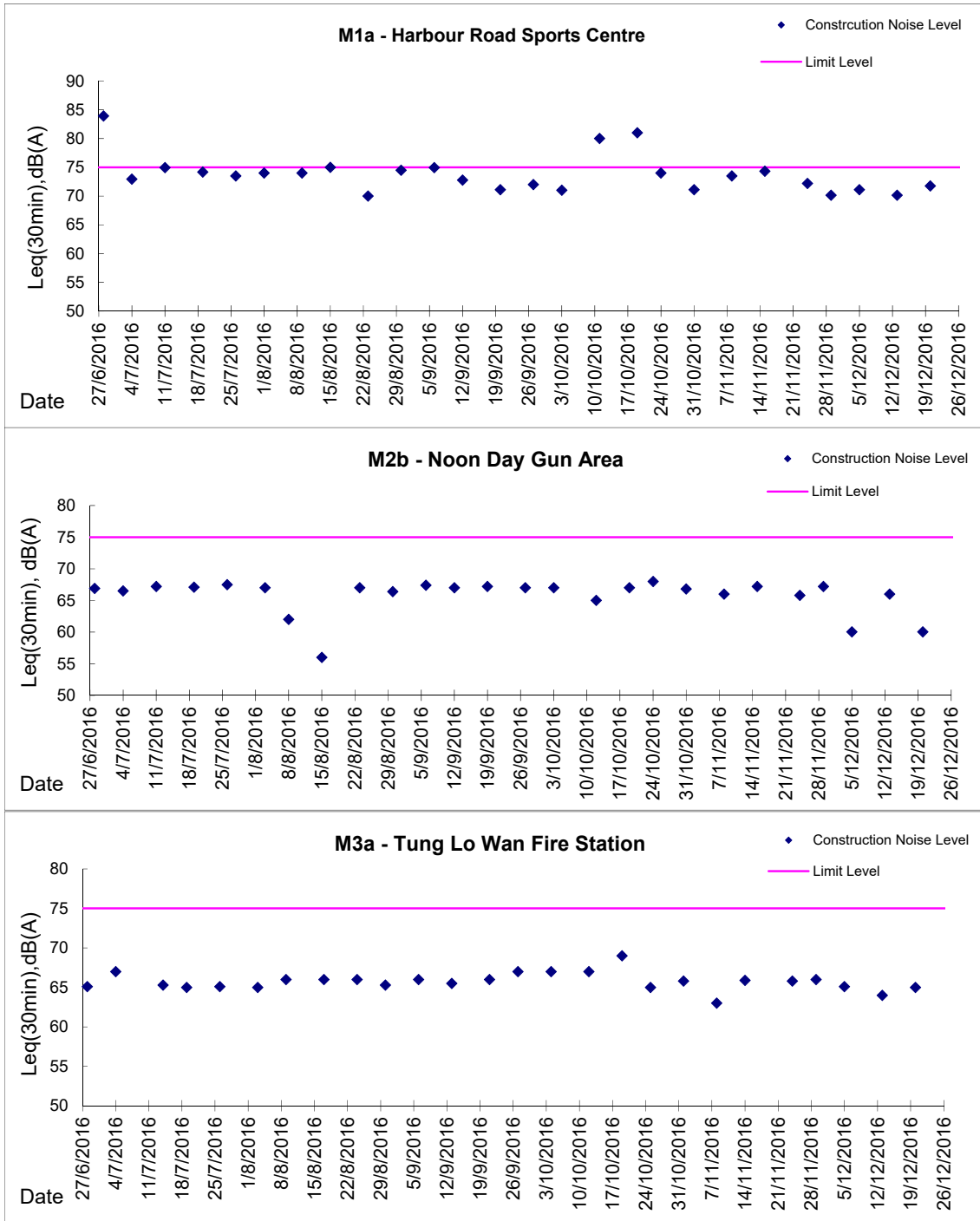
Location: M8 - City Hall

Date	Time	Weather	Measurement Noise Level			Baseline Level	Construction Noise Level	Limit Level
			Leq	L10	L90	Leq	Leq	Leq
Unit: dB(A), (30-min)								
29/11/2016	09:15	Cloudy	58.0	60.0	57.0	64	58	70
5/12/2016	10:20	Fine	60.2	67.0	56.5	64	60	70
14/12/2016	10:00	Fine	60.0	62.5	58.5	64	60	70
20/12/2016	15:14	Fine	69.0	71.0	61.5	64	67	70



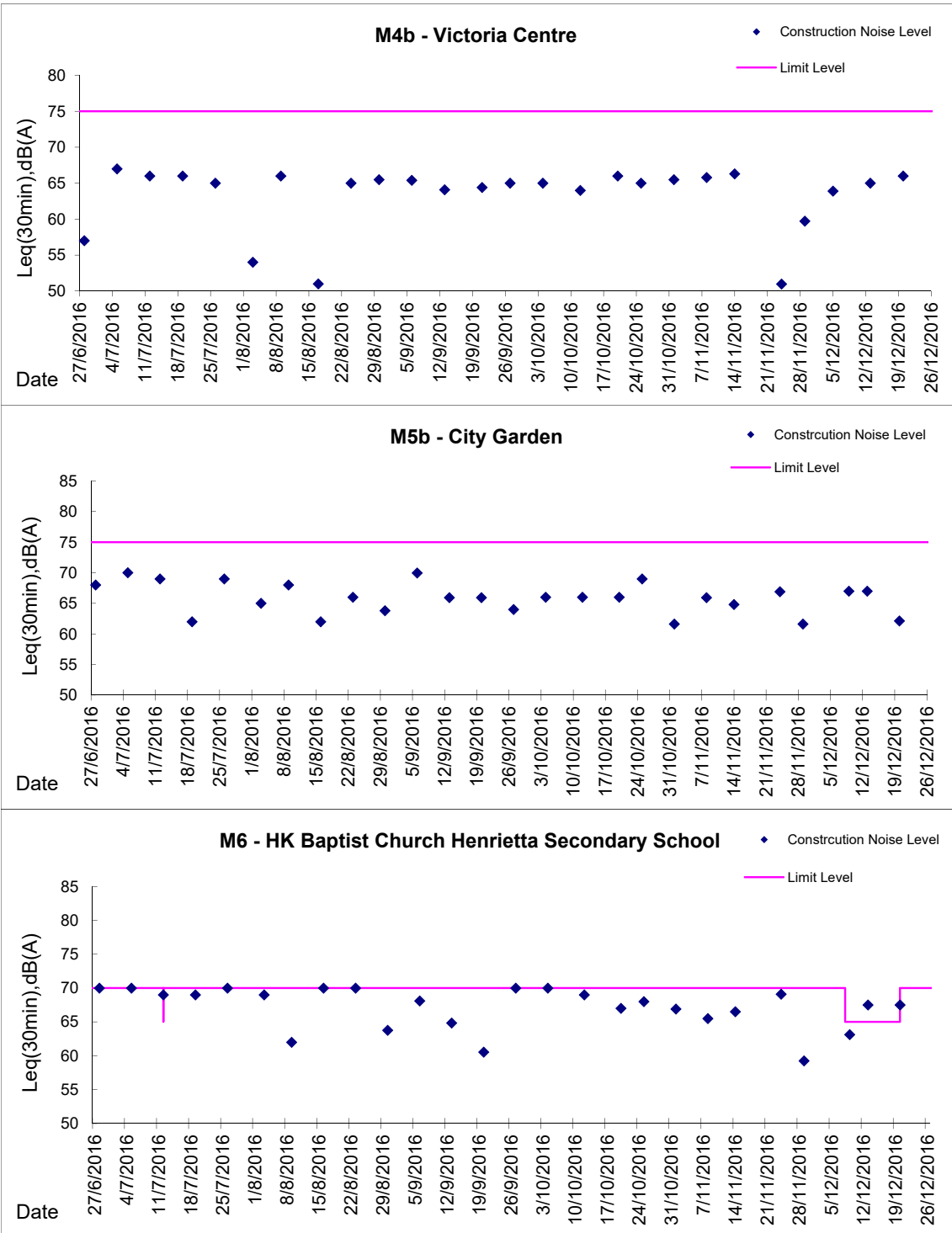
Graphic Presentation of Noise Monitoring Result

Day Time (0700 - 1900hrs on normal weekdays)



Graphic Presentation of Noise Monitoring Result

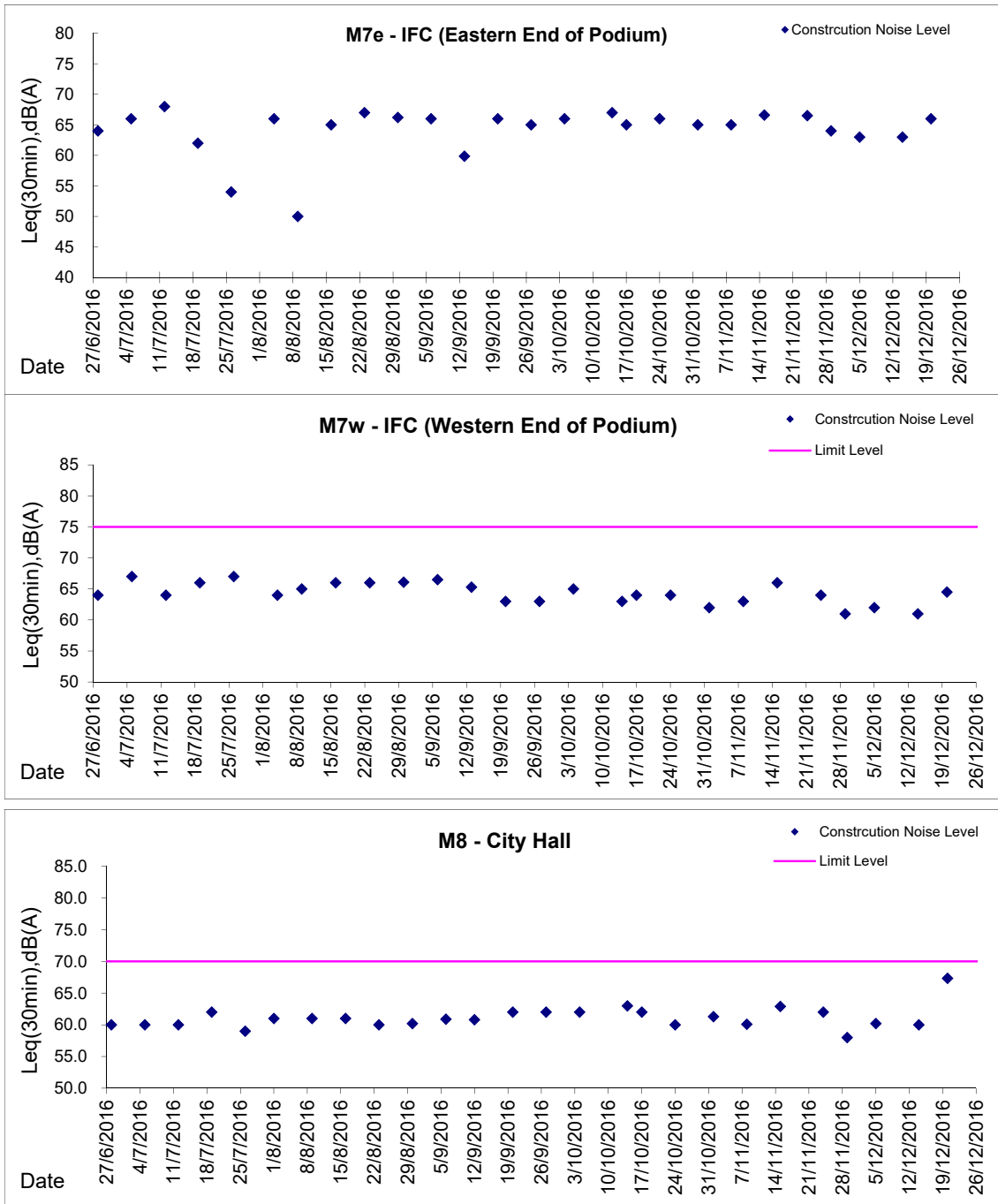
Day Time (0700 - 1900hrs on normal weekdays)





Graphic Presentation of Noise Monitoring Result

Day Time (0700 - 1900hrs on normal weekdays)



* Remark: M7e - IFC (Eastern End of Podium) is a reference monitoring station